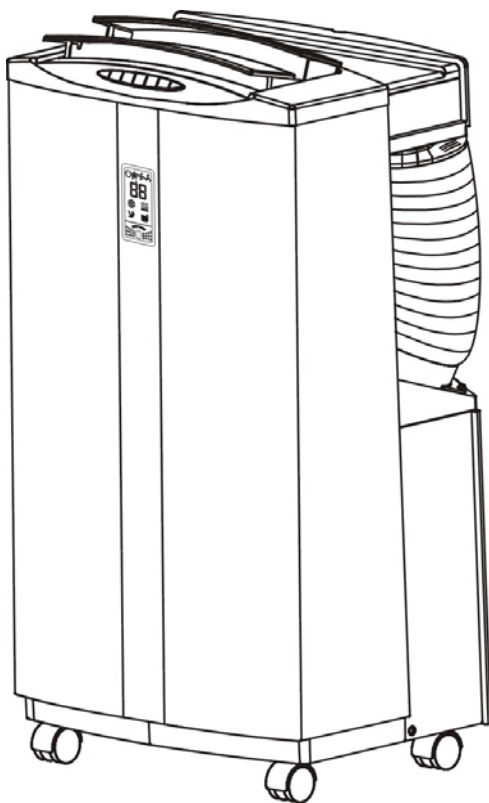




**MODEL: GDC16RWA / GDC18RWA  
GDC18RBA**

## PORTABLE AIR CONDITIONER



## INSTRUCTIONS FOR USE

### VERY IMPORTANT !

**Do not install or use your portable air conditioning unit before carefully reading this instruction manual.**

**Please retain this manual for product warranty and future reference**

### CAUTION !

- 1." DO NOT BLOCK VENTILATION " ! Please ensure the inlet and outlet ventilation is not blocked.
2. Always operate this unit on a horizontal surface to avoid water leakage.
3. Do not operate this unit in a corrosive environment.
4. This unit will only operate in an ambient temperature of 17~43 degrees Celsius.
5. Clean the air filter periodically to enjoy the most efficient cooling.
6. If you have turned the unit off, please wait at least 3 minutes before restarting.  
This is to prevent any damage to the compressor.
7. This unit needs to be plugged into a 10 Amp power point. Please do not use extension cords with this unit.
8. This unit is for indoor operation only.
9. Please ensure the adjustable air vent is open whilst in operation. The exhaust hose and drain pipe must be extended to the closest window prior to use.
10. If the supply cord is damaged, it must be replaced by the manufacturer, service agent or similarly qualified person.
11. The batteries from the remote control must be removed from the appliance before it is scrapped and disposed of safely.
12. This appliance is not intended for use by persons (including children) with reduced physical, sensory or mental capabilities, or lack of experience and knowledge, unless they have been given supervision or instruction concerning use of the appliance by a person responsible for their safety.
13. Children should be supervised to ensure that they do not play with the appliance.

### **Important.**

**The air conditioning unit must always be stored and transported upright.**

**In case of doubt we suggest to wait for at least 24 hours before you start the air-conditioning unit.**

### **PORTABLE AIR CONDITIONER**

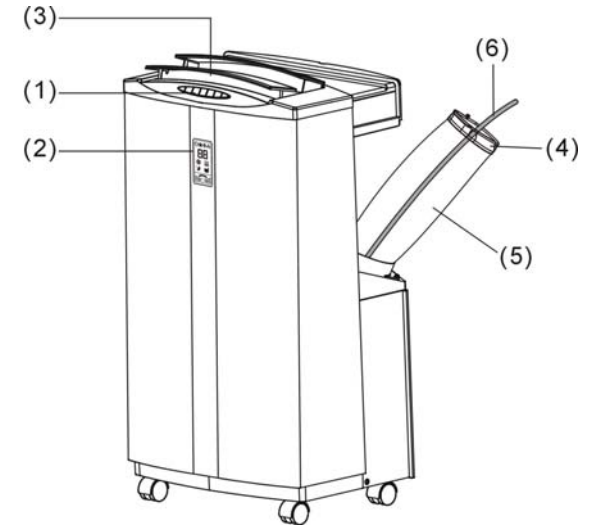
Your Air Conditioner has been designed and manufactured to the highest standards of modern engineering. This unit has been specifically designed to provide comfort in any room, particularly in warmer conditions.

Features include:

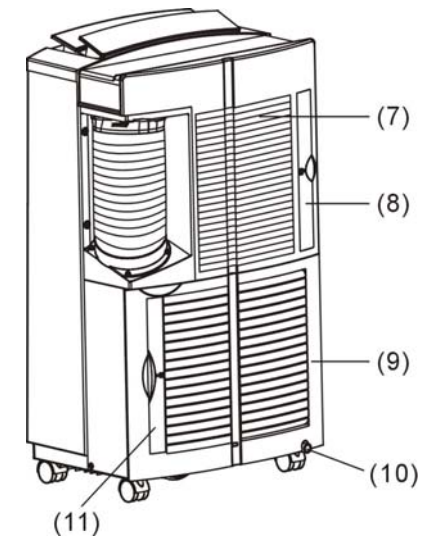
- **Easy glide castors** – can be moved easily from room to room
- **Simple DIY installation** – no electrician required – just plug into a standard 10 amp powerpoint!
- **Powerful dehumidification process and filtered air cycle for improved breathing conditions**
- **Remote control and soft touch control panel**
- **24 hour programmable timer that can be used with either the air conditioning or dehumidification setting**
- **Unique sleep control function**
- **Inverter technology (GDC16RWA, GDC18RWA, GDC18RBA) for fast and efficient cooling**
- **Self evaporative system ensuring no drip tray or hose is required**
- **220-240 Volt 50Hz operation**
- **1.6 meter cord with plug**

### **NAMES OF THE PARTS**

1. Push button switch
2. Display screen
3. Adjustable air vent
4. Window kit adaptor
5. Exhaust tube
6. Drain hose (Only available in cooling + heating models)

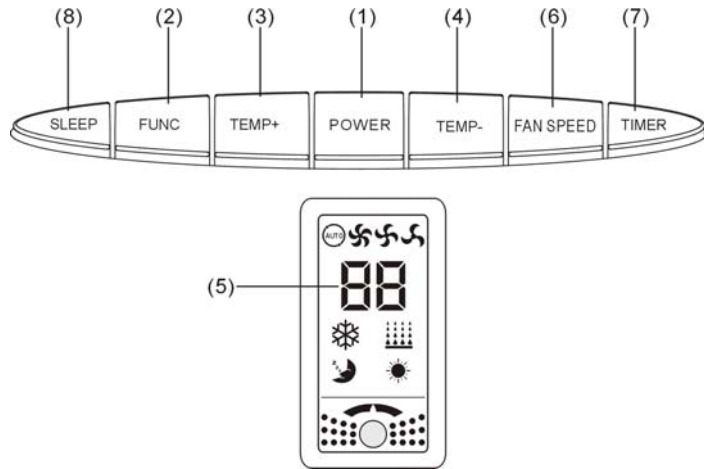


7. Cool inlet
8. Cool air filter
9. Hot inlet
10. Drain plug
11. Hot air filter



**Note: Please ensure drain plug is fitted before use. ( 10 )**

## PUSH BUTTON SWITCHES & DESCRIPTION OF FUNCTION



- 1. POWER KEY** Press to turn unit "ON" or "OFF".
  - 2. FUNCTION** Press this key to select refrigeration or dehumidification.
  - 3. TEMPERATURE REGULATION KEY (UP)**  
This key raises the preset temperature by 1°C each time it is pressed to a maximum of 30°C
  - 4. TEMPERATURE REGULATION KEY (DOWN)**  
This key lowers the preset temperature by 1°C each time it is pressed to a minimum of 17°C.
- ✘ In normal conditions, the temperature data which appears on the panel is the ambient room temperature, not the temperature which is set by the user. When the user has adjusted and set the temperature to the desired level, the data on the panel will return to the ambient room temperature 5 seconds later.
- The ambient temperature will descend or change according to the temperature which is set by the user, but the temperature descendant time and speed will depend on the environment and space where it operates.
- For example, if the ambient temperature is too hot or the room is too large, the rate at which the temperature descends will be slow.**

- 5. L.E.D. DISPLAY** Indicates the current room temperature or the timer setting. If the pre-set temperature is adjusted by the user the display will return back to room temperature automatically.

### Error Display

- E1:** Indicates open circuit or short circuit in room temperature sensor.  
**E2:** Indicates open circuit or short circuit in evaporator temperature sensor.  
**E3:** Indicates a fault in the compressor air outlet temperature sensor.  
**E4:** Indicates a data transmission error between the compressor drive plate and main PCB.  
**E5:** Indicates IC error.  
**E7:** Indicates the water tank is full inside.  
**Please contact an authorized service centre if any of the above error messages are shown.**

- 6. FAN SPEED** Press to select LOW, MEDIUM, HIGH or AUTO fan speed.  
If "AUTO" is selected, the unit operates at maximum cooling capacity when the room temperature less the setting temperature is above 2°C.  
When the room temperature less the set temperature is below 2°C, the unit operates at middle cooling capacity.  
When the room temperature equals the set temperature, the unit operates at minimum capacity.  
If "HIGH" is selected, the unit operates at maximum cooling capacity regardless of the pre-set temperature. Similar operation is applied when "MEDIUM" OR "LOW" is manually selected.

- 7. PROGRAMMABLE TIMER** Programmable timer ON/OFF key.  
**TIMER-ON:** The timer-on key is used to turn the unit on automatically when the set time is reached.

***(The indicator light will be turned on when the timer is functioning.)***

1. Press the "TIMER" key at stand-by status to set the time.  
Choose the function desired (refrigeration or dehumidification.)
2. Once the set hour has come to an end, the unit will turn on

automatically.

3. If you press the "POWER" key before the timer is complete, the set time will be cancelled and the unit will remain turned on.

**TIMER-OFF:** Similarly the timer-off is used to turn the unit off automatically after the set time is over. Press the 'Timer' key while the unit is turned on to activate turn-off timer and then set the number of hours required.

## 8. SLEEP CONTROL FUNCTION

When setting the "sleep comfort" mode please ensure that you set the number of hours required by using the timer function. Once the timer is set, the L.E.D. display will automatically return to your current room temperature.

To increase the preset temperature - press the "Temp+" button and for each press, the temperature will be increased by 1°C.

Likewise to set a lower temperature - press the "Temp-" button and for each press, the temperature will be decreased by 1°C.

During the course of this cycle, to ensure maximum sleep comfort, the micro-processor memory will raise the pre-set temperature 0.5°C each half hour to a maximum of 2°C over two hours and then maintain that temperature for the balance of the time set.

The portable air conditioner is fitted with a 3 minute compressor delay protection circuit which simply means that the compressor requires 3 minutes to start - from either being switched on, or when changing from "dehumidify" to any air conditioning mode.

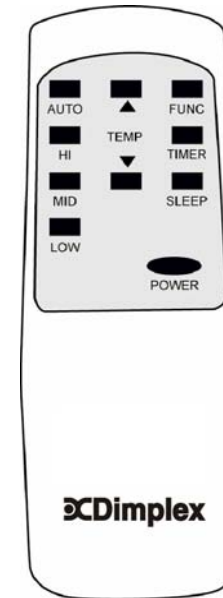
**Note:** In sleep mode, the fan speed will automatically turn to 'Low' and the LED light will automatically turn off after 1 minute. However, it can be turned on by pressing any key.

## 9."E7"

Indicates that the water tank is full. If so, please unplug the water stopper at the back of the unit and then lean the unit to drain the water out, the unit can then be restarted. If the error: E7 is presented again, please contact your nearest service agent.

*Note: Cooling function does not operate if the ambient temperature is over 43°C.*

## REMOTE CONTROL FUNCTION

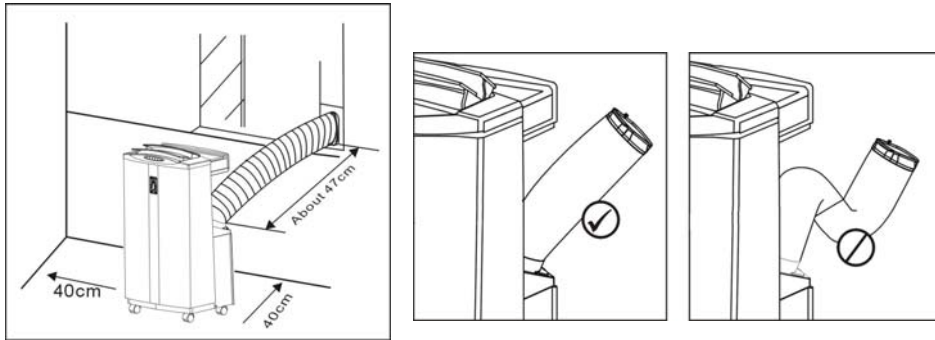


1. POWER
2. FUNC
3. TIMER
4. AUTO
5. HI
6. MID
7. LOW
8. SLEEP
9. TEMP.

- ON/OFF switch
- Function ("Mode" selector)
- Hourly programming
- Automatic fan speed
- High fan speed
- Medium fan speed
- Low fan speed
- Night operation selector
- Temperature selector

## INSTALLATION

Install the portable air conditioner in a flat and spacious location where the air inlets and outlets will not be blocked. A minimum clearance of 40cm from a wall or other obstacles should be kept (as depicted below). The appliance should not be used in the laundry.



## MAINTENANCE

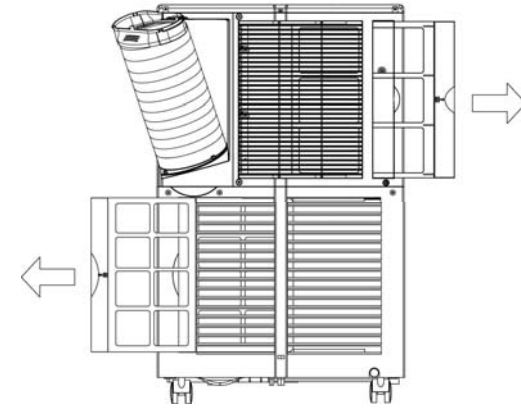
**PLEASE DISCONNECT THE POWER CORD BEFORE YOU PROCEED WITH MAINTENANCE**

### AIR FILTER

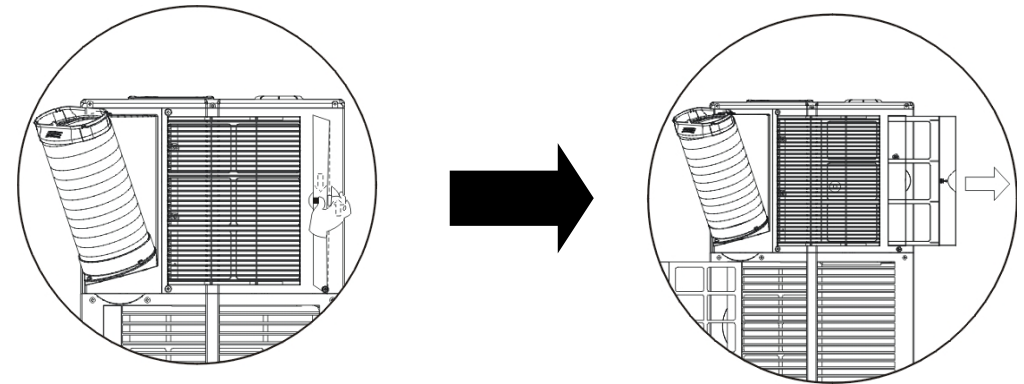
The two air filters located at the back of the unit can be removed, simply by gripping the filter handle and pulling the frame sideways.

### CABINET

Wipe with a damp cloth and polish with a soft cloth.



To remove the air filter, please follow the arrow direction and push the filter lightly, then take out the filter for cleaning.

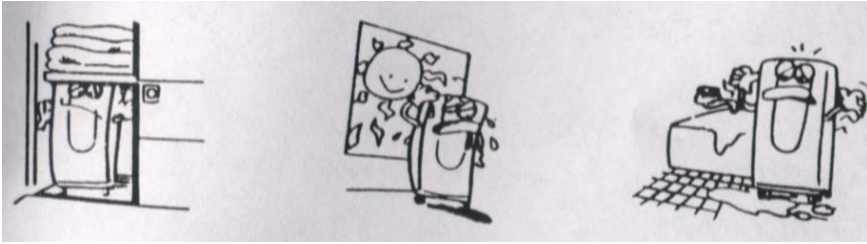


## POWER SUPPLY

- (1) Confirm the correct power.
- (2) Insert the plug into the power outlet firmly.  
In case of a dangerous water leak, prevent the power cord from getting wet.
- (3) Do not pull the power cord with force as it may damage components within the power cable.

## PLACE OF USE

- (1) Because the machine exerts hot air, please don't operate it in a confined place.
- (2) Don't place the machine in a sunlit corner otherwise the colours of the cabinet will fade.



## HELPFUL HINTS

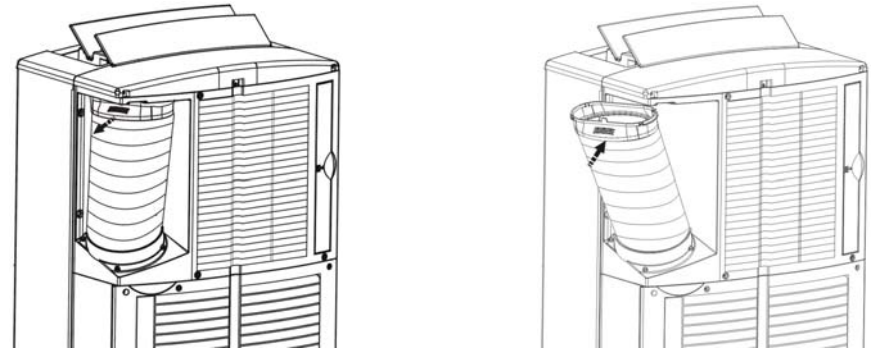
This unit is fitted with a special thermal cut off device.

When selecting the refrigerating function, the unit should operate in room temperatures between 17-43°C.

Please ensure the unit is not placed against objects which will obstruct air intake (i.e. furniture or curtains) as this will affect its performance.

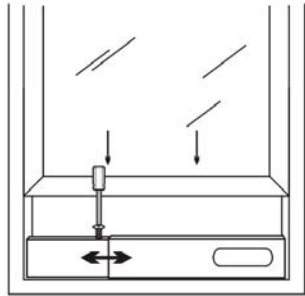
Do not place the unit in direct sunlight, as this may cause the unit to overheat and turn off.

## EXHAUST PIPE AND DRAIN PIPE

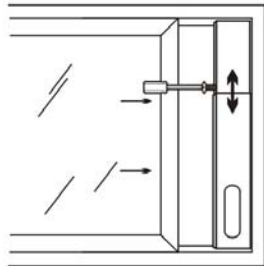
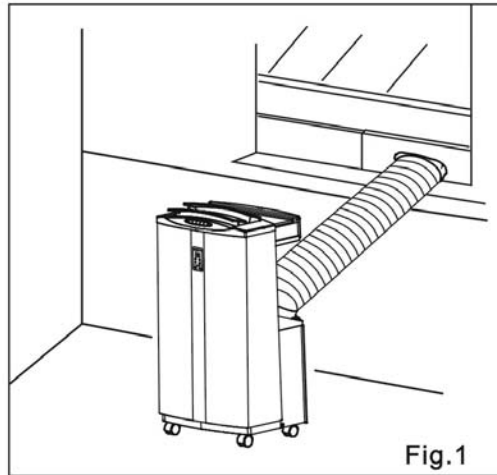


- To remove the exhaust pipe, press down slightly and pull away from the unit – turn anti-clockwise.
- Picture indicates the removal of the exhaust pipe.
- Please ensure the exhaust pipe is extended to the closest window before operating this unit.

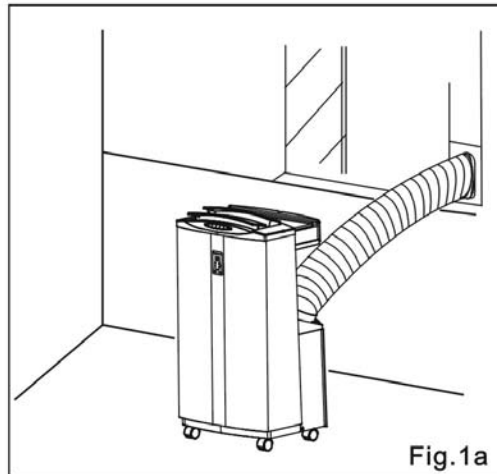
**Install the Flexible Exhaust Hose and the Adjustable Window Slider Kit as depicted in Fig.1 & Fig.1a.**



Window slider kit  
min: 55cm  
max: 100cm



Window slider kit  
min: 55cm  
max: 100cm



## TROUBLE SHOOTING

Never try to repair or dismantle the air conditioner yourself. Unauthorized repairs may result in the loss of warranty and can endanger the user and the property.

Problem	Cause	Solution
The air conditioner does not function.	No power supply.	Connect to a functioning power outlet and switch on.
	The alarm light is on.	Empty the internal water container.
	Timer function is active.	Deactivate TIMER function.
The air conditioner does not seem to perform.	In direct sunlight.	Close curtains.
	Windows or doors open or another cooling source in the room.	Close doors and windows, turn off alternate cooling sources.
	Dirty filter	Clean the filter(s).
	Air inlet or air outlet blocked.	Remove the blockage.
	Room temperature lower than the selected value.	Change temperature selection.
The unit is noisy.	Unit is not level.	Place on an even, solid surface (less vibrations.)
The compressor does not work.	The overheat protection is activated.	Wait 30 minutes until the temperature has decreased, then turn the unit on again.
The remote control does not function.	Distance too long.	Make sure the remote control is correctly aimed at the control panel.
	Remote control signal not detected by the control panel.	
	The batteries have drained	Replace the batteries.

To correct problems not mentioned in the table and/or if the recommended solutions fail to solve the problem, please contact an authorized service centre.

Please contact Glen Dimplex for your nearest authorized service agent:

Australia – 1300 556 816 New Zealand – (09) 274 8265

## **SPECIFICATIONS**

Model No.	<b>GDC16RWA</b>	<b>GDC18RWA / GDC18RBA</b>
Power Source	220-240V~ 50Hz AC	220-240V~ 50Hz AC
Power Consumption (EN14511)	1800W	2200W
Rated Power (EN60335)	2000W	2300W
Cooling Capacity	4700W	5300W
Air Flow	600 M <sup>3</sup> /H	600 M <sup>3</sup> /H
Moisture Removed	65 L/DAY	70 L/DAY
Refrigerant	R410A	R410A
Min. room size	12m <sup>2</sup>	14m <sup>2</sup>
Dimensions (mm)	476W x 358D x 840H	476W x 358D x 840H
Net Weight	35KG	36KG

**If you have any issues with your unit, please contact Glen Dimplex for your nearest service agent. Proof of purchase is required at the time of service.**

### **Glen Dimplex Australasia Ltd**

38 Harris Road, East Tamaki,

Manukau, Auckland 2013

New Zealand

Ph: (09) 274 8265

Fx: (09) 274 8472

### **Glen Dimplex Australia Pty Ltd**

2/205 Abbots Road,

Dandenong South VIC 3175

Australia

Ph: 1300 556 816

Fx: 1800 058 900